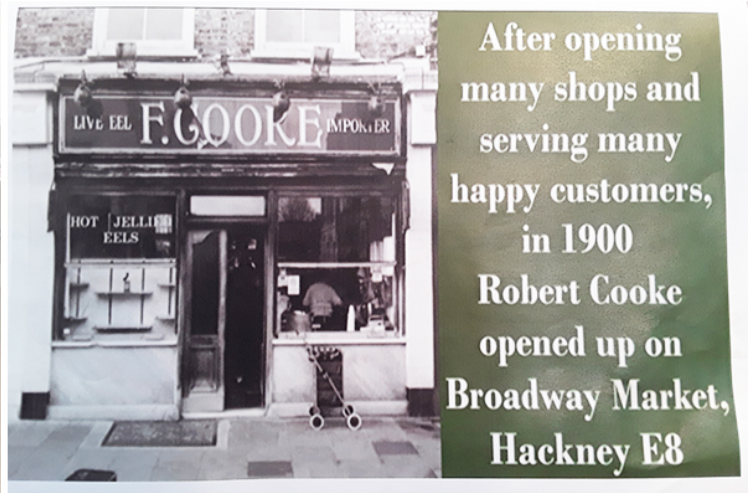


Cruise coffee morning and lunch at Silverpoint Court Residential Care Home



Our Silverpoint Court Residential Care Home passengers had a wonderful coffee morning today, out on our top deck lounge, watching as we pulled into port.

We all enjoyed some **music and quizzes** and discussed our **Sparkle magazines** from cover to cover. Recreation and Well-Being Champion Julie helped to bring passengers to the top deck while Lynda served everyone their special coffees on board ship.

What an adventure we've had and we're now back at home sweet home!

And to celebrate our homecoming our ladies and gents tucked into a **fantastic themed lunch** of prawn cocktail, pie and mash with liquor (Lynda kindly went to the Cooke's shop for us so she could deliver it for our residents) and jam roly-poly with custard – there were lots of clean plates all around, finished with a nice cup of tea!

Lynda also printed out place mats about Cookes ('Live eel importer!') and Julie and Lynda decorated our lounge with Union Jacks.

Everyone said it was a fun-filled day and the food had really taken them back to when they were younger. *Good times!*